



## CAPTURE®

### RAD7 Data Acquisition and Analysis Software



DURRIDGE's free CAPTURE software for Macintosh and Windows provides the ability to download radon data files from the RAD7 and issue commands to the instrument for performing various common tasks. A chart recorder renders sophisticated real-time graphs of radon and thoron data from single or multiple RAD7s. Included with CAPTURE is a complete user's manual and several sample RAD7 data files. CAPTURE contains built-in support for the English and Chinese languages. Additional machine-generated language resources are available upon request.

CAPTURE can perform two-way communication with RAD7 devices containing built-in RADLINK remote access software, making it easy to download RAD7 data and monitor instruments in real-time.

CAPTURE's extensive graphing features include advanced data navigation, multiple statistics panels, and enhanced selection abilities. Data may be exported to a variety of human-readable formats. High-resolution printer output is always just a click away.

Download the latest  
**Newsletter Signup Now** >

**version of CAPTURE®**

[CAPTURE v5.7 for Windows](#)

[CAPTURE v5.7 for macOS](#)

Attention Mac FireFox users: if CAPTURE fails to download properly and the browser window fills with gibberish, type "about:support" in the URL bar and press Enter. Click the "Show In Finder" button near the Profile Folder listing. A folder will open containing a file called mimetypes.rdf. Quit FireFox, and then delete the mimetypes.rdf file.

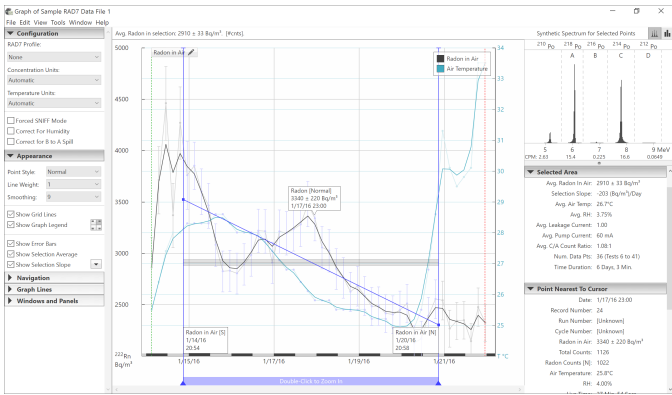
### USB to Serial Adaptor

[USB to Serial Adaptor Cable](#) (HTML)

[USB to Serial Adaptor Drivers](#) (HTML)

The RAD7 and the DRYSTIK connect to the computer using an included USB to Serial adaptor cable. For CAPTURE software to communicate over this connection it is necessary to install the appropriate driver. Drivers for adaptors from StarTech and Keyspan are also present on the DurrIDGE USB stick, which is included with the RAD7.

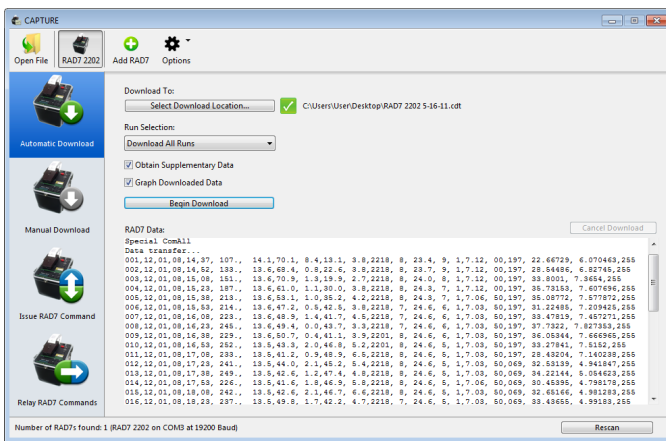
**CAPTURE® User's Manual**



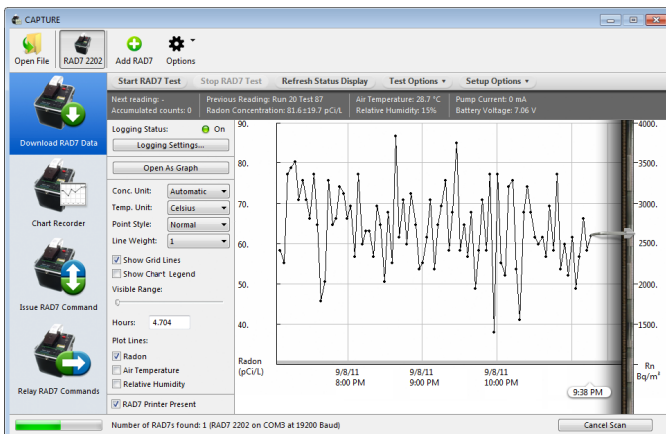
Radon Data graph in CAPTURE software (Windows 10 Screenshot)

## CAPTURE® In Depth

Click each image for a larger view.



The Download RAD7 Data Panel makes it easy to obtain RAD7 test runs along with supplementary information needed for advanced data analysis. CAPTURE's ability to control the RAD7 extends beyond the simple downloading of data: it is also possible to start and stop testing runs, obtain data summaries, configure the RAD7's numerous settings, and obtain the RAD7's serial number and calibration date. In fact, any command available on the RAD7's physical keypad may be issued from within CAPTURE, whether the machine is located across the room or across the continent.



Note: the CAPTURE User's Manual is also available from within the CAPTURE application Help Menu.

[CAPTURE User's Manual \(HTML\)](#)

## CAPTURE® Tutorial Video



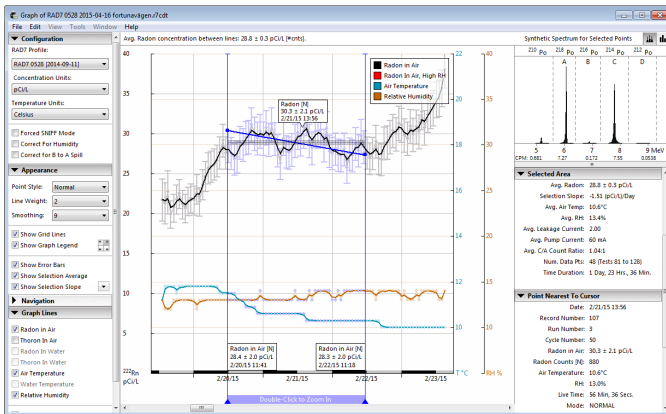
[Using CAPTURE 1: General Setup](#)

2014 YouTube video (10 min.)

## Related Links

[End User License Agreement \(HTML\)](#)

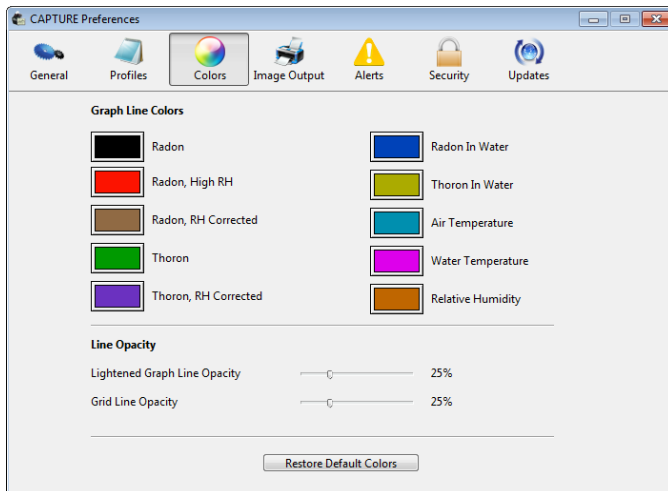
CAPTURE's **Chart Recorder** displays a real-time graph of RAD7 data as it is recorded. As a radon test progresses, a set of virtual pens plot radon concentration, temperature, and humidity data on the right side of the display, while older readings scroll to the left. The Chart Recorder is accompanied by a Button Bar for starting and stopping tests and configuring RAD7 settings. Below the Button Bar is a Status Display panel indicating the current state of the RAD7.



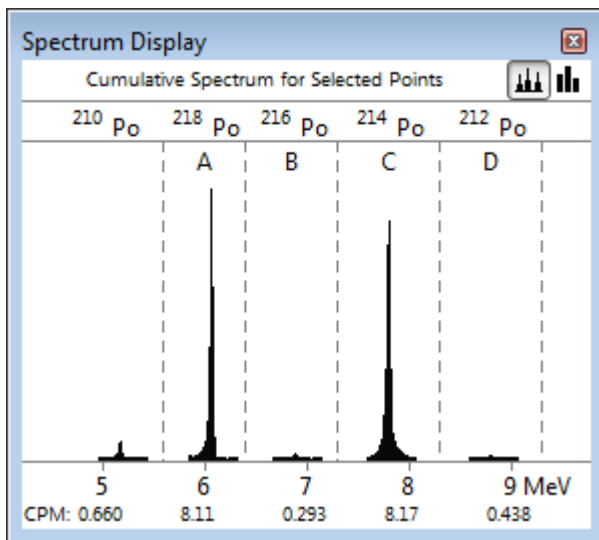
The **Graph Window** displays radon, thoron, temperature, and humidity across a scrolling timeline. Auxiliary panels provide data navigation controls and statistics on the full data set and the selected portion. Graph data may be exported in several formats for use with spreadsheets and other software.

The **Graph Parameters Window** is used to configure RAD7 data for graphing. CAPTURE supports data files generated using RAD7 accessories such as the RAD Aqua and Big Bottle System. By accounting for the physical parameters of the experimental setup

such as tubing lengths and temperature data, CAPTURE can calculate radon and thoron concentrations in water.



CAPTURE's **Preferences Window** provides controls for changing how CAPTURE behaves when connecting to RAD7s, downloading RAD7 data, and formatting the downloaded information. Here you can also define device profiles based on your RAD7 calibration records, and configure the program's ability to read third party data files produced by RAD7 accessories.



The **Spectrum Panel** displays a synthetic representation of the spectrum printed out by the RAD7. It indicates alpha energies signaling the presence of radon and thoron daughter particles.

## Download older versions of CAPTURE®

Legacy versions of CAPTURE are made available for older operating systems, including Windows XP and Mac OS X Snow Leopard.

## CAPTURE® Version History

Review the list of features and changes that were implemented in each past version of CAPTURE.

[CAPTURE Version History](#) (HTML)